

**Wastewater Laboratory Workshop**  
**Tuesday, May 19, 2009**

**Ohio's Discharge Monitoring  
Report-Quality Assurance  
Study Program (DMRQA)**

**OTCO-S11068-OM**

Operator Training Committee of Ohio, Inc.  
Curtis L. Truss Jr., Executive Director

Major and selected minor permittees under the National Pollutant Discharge Elimination System NPDES program are required to participate in the annual Discharge Monitoring Report–Quality Assurance (DMR-QA) study program.

You are responsible for ensuring that results of DMR-QA tests performed by your in-house and/or contract laboratories are graded by the accredited Proficiency Testing (PT) Providers.

You are responsible for following up with the laboratories in taking corrective actions and for submitting a corrective action report(s) to your state DMR-QA coordinator for any results returned “Not Acceptable”.

DMR-QA evaluates the analytical and reporting ability of the laboratories that routinely perform inorganic chemistry and whole effluent toxicity self-monitoring analyses required by their NPDES permit.

A major discharger is defined as a facility that discharges at least one million gallon per day or serve a population greater than 10,000.

You must report results for the analytes listed in your permit provided that they also are included in the DMR-QA study analyte list.

Not all of the analytes listed on your NPDES permit may be included in an individual DMR-QA study. You may voluntarily report additional study analytes that are not listed in your permit.

## Current Study

Study 29, mailed in **April 2009**,  
includes

- Chemistry
- Microbiology
- Whole Effluent Toxicity (WET) tests.

All proficiency test samples are supplied by the American Association for Laboratory Accreditation (A2LA) proficiency testing providers.



- Drinking Water
- Non-potable Water
- Solid and Chemical Materials
- Air
- **DMR-QA**

How are they validated?

Successful completion of the A2LA evaluation process is granted to proficiency testing provider for the design, preparation, and operation of PT schemes that meet:

- **ISO Guide 43-1:1997**  
*(International Standards Organization)*
- **ILAC G13:2007**  
*(International Laboratory Accreditation Cooperation)*
- **EPA National Standards for Water Proficiency**
- **Testing Studies Criteria Document,**
- **relevant sections of ISO Guide 34:2000**
- **ISO/IEC 17025:2005**  
*(International Electrotechnical Commission)*
- **2003 NELAC Chapter 2 and Chapter 5:**  
*(National Environmental Laboratory Accreditation)*

- Resource Technology Corporation (RTC)
- Environmental Resource Associates, Inc.
- *NYS DOH Environmental Laboratory Approval Program*
- *Wibby Environmental*
- *Absolute Standards, Inc*
- *NSI Solutions, Inc.*
- *Microcheck, Inc.*

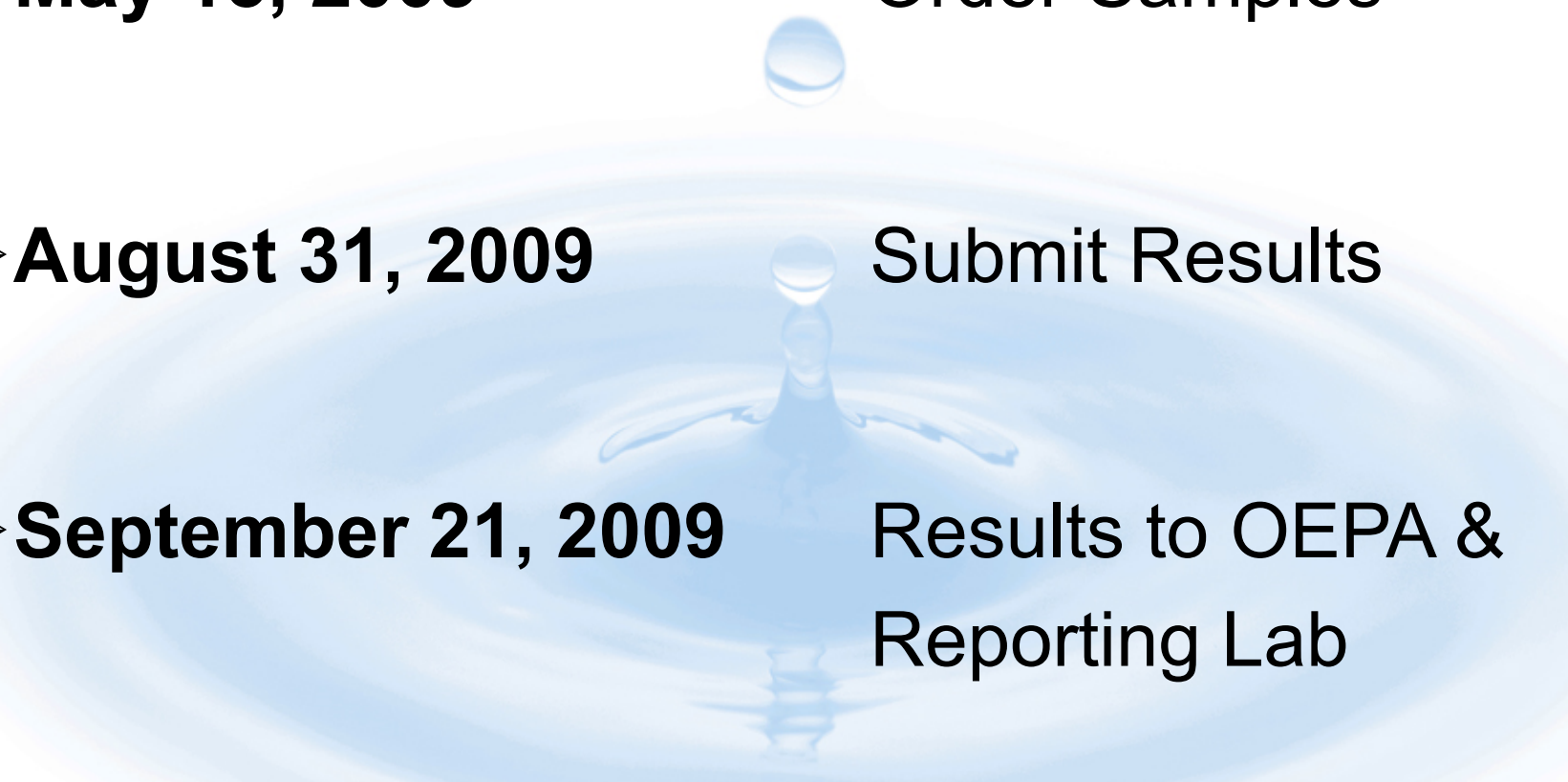


## Current Study

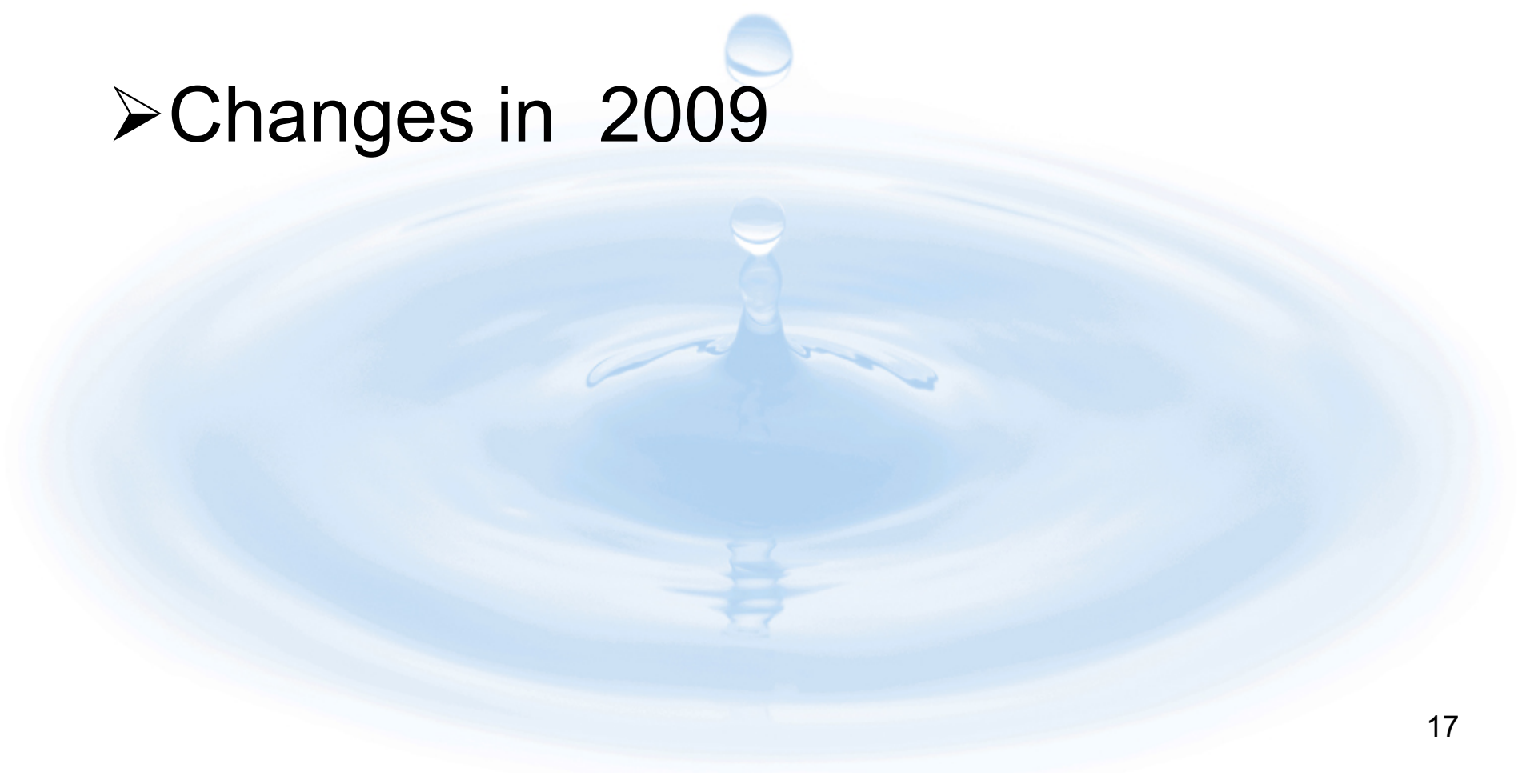
Study 29, mailed in **April 2009** includes

- 
- Chemistry
  - Microbiology
  - Whole Effluent Toxicity (WET) tests.

# Important Deadlines

- 
- A decorative background featuring a blue water splash with a central droplet and concentric ripples, centered behind the text.
- **May 15, 2009** Order Samples
  - **August 31, 2009** Submit Results
  - **September 21, 2009** Results to OEPA & Reporting Lab
  - **October 1, 2009** Results to Permittee

➤ Changes in 2009



Your laboratory may use Water Pollution results that were performed between January 1, 2009 and August 31, 2009 for reporting data for your DMR-QA obligations. This provides added flexibility to you and your laboratories for performing required PT analyses.

Previously, WP studies used in lieu of DMR-QA had to close sometime during the DMR-QA study. EPA will allow laboratories to use WP results done during the same calendar year as DMR-QA, as long as the WP study closes before the end of the DMR-QA study (August 31, 2009). This change will especially help in planning for next year's DMR-QA study.

How laboratory data is submitted to the Proficiency Testing (PT) Provider for grading and how graded results are transmitted to state DMR-QA coordinators for processing.

Permittees will not need to report data to the PT Provider on their laboratories behalf as was required in past studies.

For many previous studies, PT Providers sent graded test results to permittees, laboratories and state coordinators.

Permittees used the information from the PT Providers to report to the state coordinator.

But.....

**This year, permittees will not be receiving graded reports directly from PT Providers.**

Permittees will be receiving copies of the graded results from their laboratories.

Rather than assembling various graded reports for laboratories, filling out the NPDES Permittee Data Report Form (EPA Form 6400-01) and the analyte checklists, the permittee is required to only fill out the NPDES Permittee Data Report form and required checklists, indicating on the checklist, the laboratory's grade for each required analyte.

Ohio Program?

**Mission Statement:**

"The Division of Environmental Services provides biological and chemical data and technical assistance to other divisions within Ohio EPA, state and local agencies, and private entities in order to help monitor and protect human health and the environment to ensure a high quality of life in Ohio."

The Division of Environmental Services (DES) - the Agency's laboratory - provides this data. Activities performed by DES are divided into two major program areas: Analytical Laboratory Services and **Laboratory Certification and Assistance.**

*The Laboratory Certification and Assistance program includes the Drinking Water and Voluntary Action Program (VAP) laboratory certification programs. In addition, DES conducts performance audit inspections of laboratories for NPDES permitting purposes and provides training and technical assistance within and outside Ohio EPA.*

*In addition to these two certification programs, DES also coordinates U.S. EPA's annual Discharge Monitoring Report - Quality Assurance (**DMR-QA**) proficiency testing program for wastewater laboratories in Ohio.*

*Based on the results of annual DMR-QA testing, as well as requests from the Division of Surface Water, DES conducts performance audit inspections of wastewater testing laboratories used by the regulated community.*

**DMR-QA Coordinator**

*Steve Roberts*

*Ohio EPA - Division of Environmental Services*

*8955 East Main Street*

*Reynoldsburg, OH 43068*

*steve.roberts@epa.state.oh.us*

*(614) 644-4225*

**USEPA LAB CODES**

*Mr. Charles Feldmann*

*U.S. EPA*

*26 W. Martin Luther King Drive, M/S 140*

*Cincinnati, OH 45268*

*Tel: (513) 569-7671*

*Fax: (513) 569-7191*



**ANY PARTING QUESTIONS?**

**See Steve**